

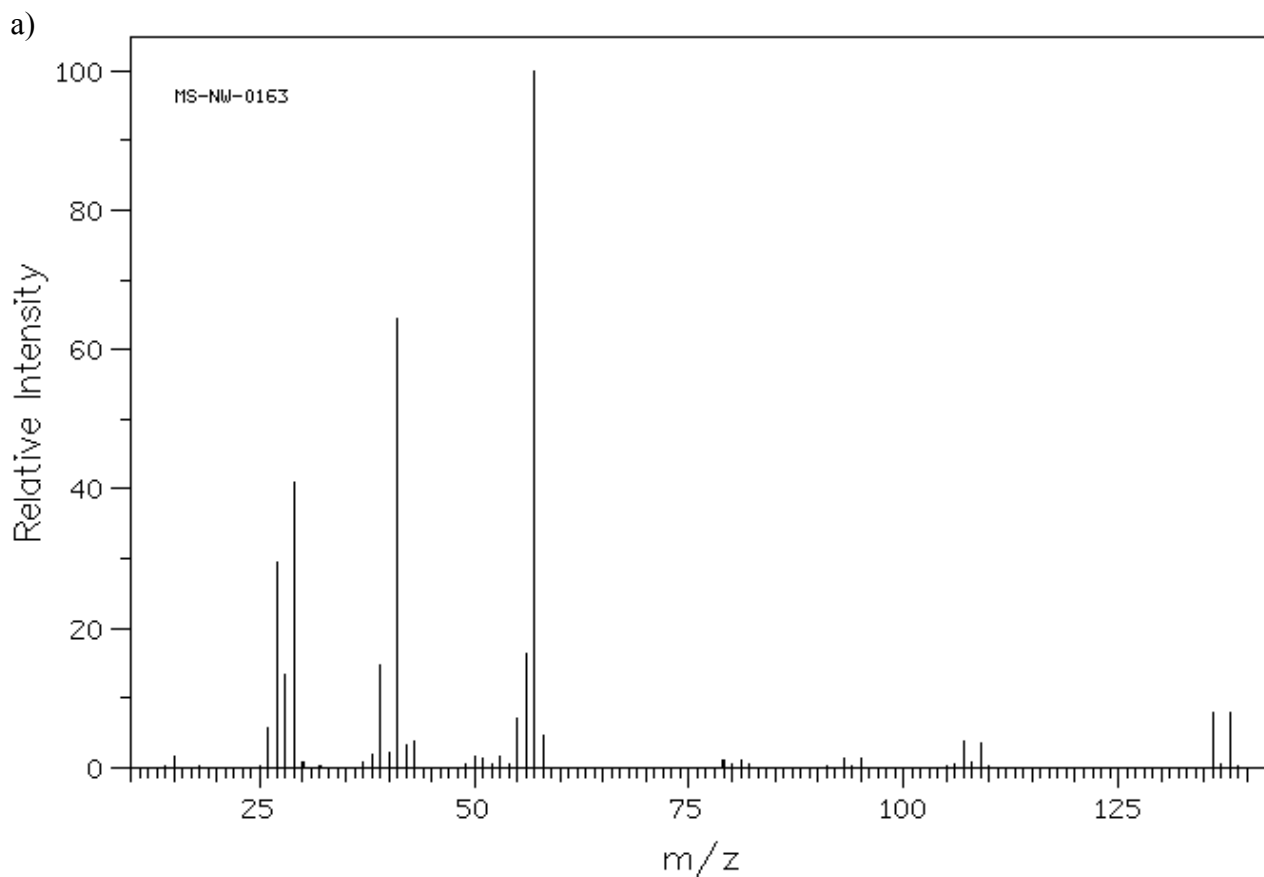
Chemguide – questions

MASS SPECTRA: THE M+2 LINE

1. The following mass spectra are taken from the SDBS (SDBSWeb : <http://sdb.sdb.aist.go.jp> (National Institute of Advanced Industrial Science and Technology, 8/8/2014).

For each spectrum, work out as far as you can which substance produced it, giving as much supporting evidence as you can.

I am expecting you to remember the relative isotopic masses of the various atoms you might be interested in.



Chemguide – questions

